

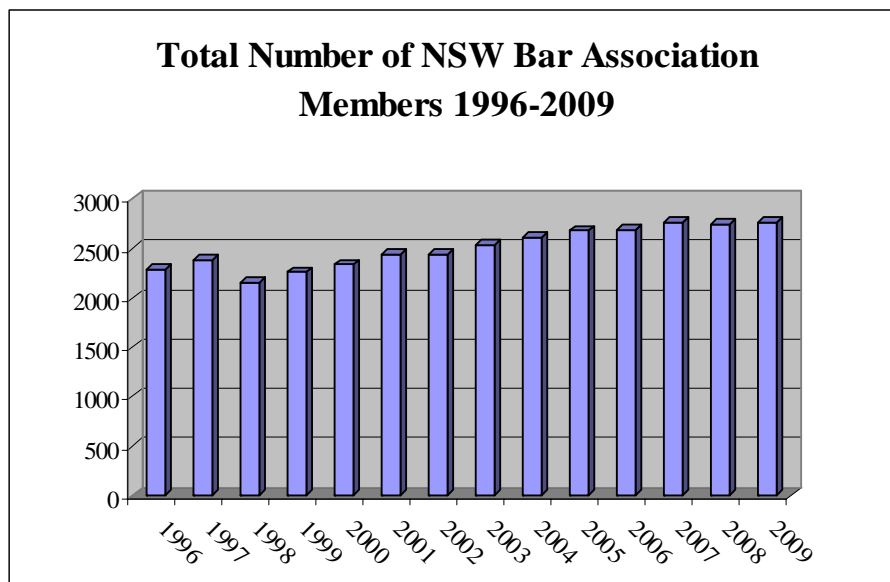
SECTION ONE
ALL MEMBERS OF THE NSW BAR
ASSOCIATION
(PRACTISING AND NON PRACTISING)

TABLE OF CONTENTS

TOTAL NUMBER OF MEMBERS	3
MEMBERSHIP DISTRIBUTION BY GENDER	4
MEMBERSHIP DISTRIBUTION BY CATEGORY 1996 - 2009	5
GEOGRAPHICAL LOCATION OF MEMBERS	6
AGES OF MEMBERS	6
SENIOR AND JUNIOR MEMBERS (INNER/OUTER BAR).....	7

TOTAL NUMBER OF MEMBERS 1996-2009

Year	Total	Annual % Change
1996	2290	
1997	2390	4.37%
1998	2161	-9.06%
1999	2265	4.81%
2000	2337	3.18%
2001	2443	4.53%
2002	2448	0.20%
2003	2537	3.60%
2004	2609	2.84%
2005	2680	2.72%
2006	2685	0.19%
2007	2764	2.94%
2008	2744	-0.72%
2009	2763	0.69%



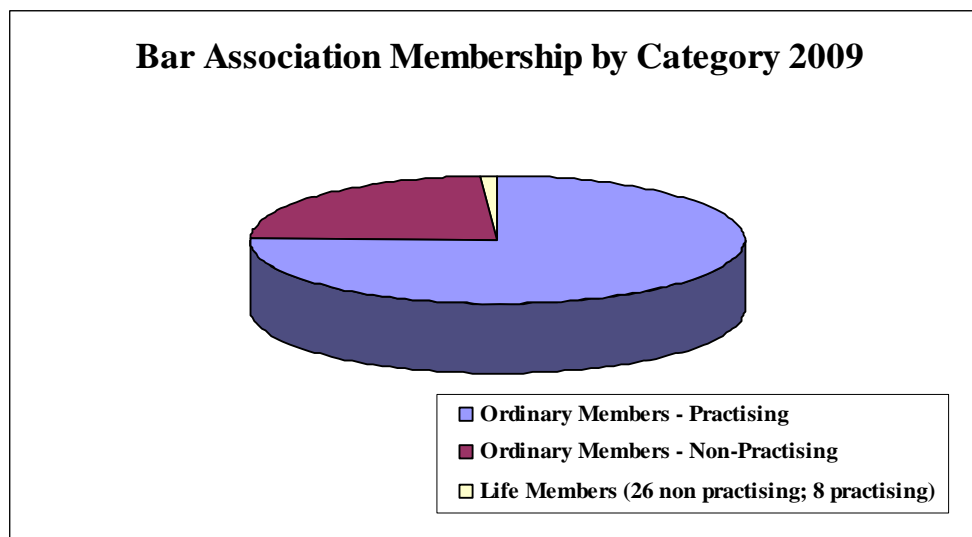
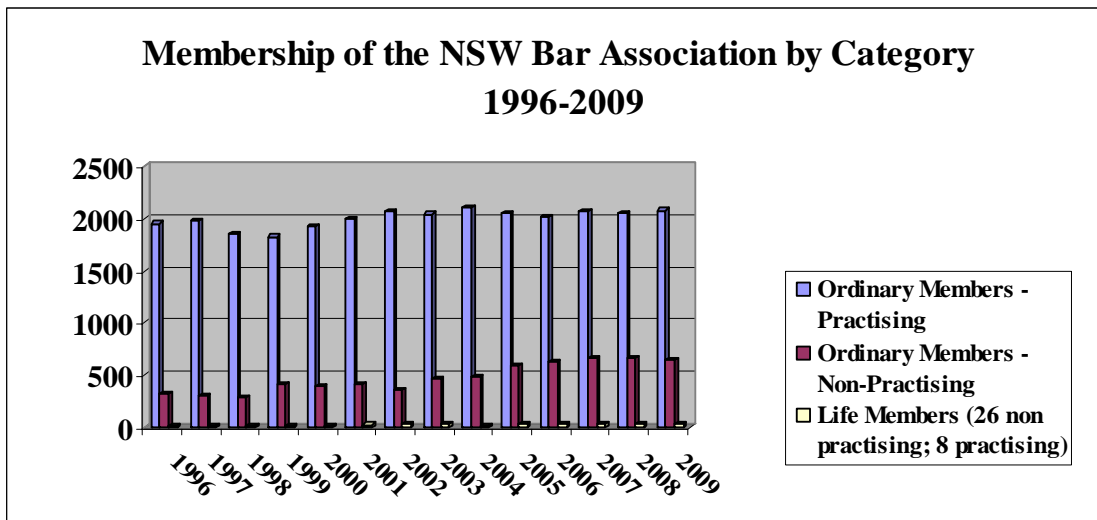
MEMBERSHIP DISTRIBUTION BY GENDER

	2009	Percentage
Male	2263	82%
Female	500	18%
Total	2763	



MEMBERSHIP DISTRIBUTION BY CATEGORY 1996 - 2009

	1996	1997	1998	1999	2000	2001	2002	2003	2004	2005	2006	2007	2008	2009
Ordinary Members - Practising	1951	1976	1854	1825	1919	1999	2066	2041	2099	2055	2020	2061	2052	2078
Ordinary Members - Non-Practising	320	313	282	420	397	416	353	466	486	595	634	672	660	651
Life Members (26 non practising; 8 practising)	19	20	25	20	21	28	29	30	24	30	31	31	32	34
Total Number of Members	2290	2309	2161	2265	2337	2443	2448	2537	2609	2680	2685	2764	2744	2763



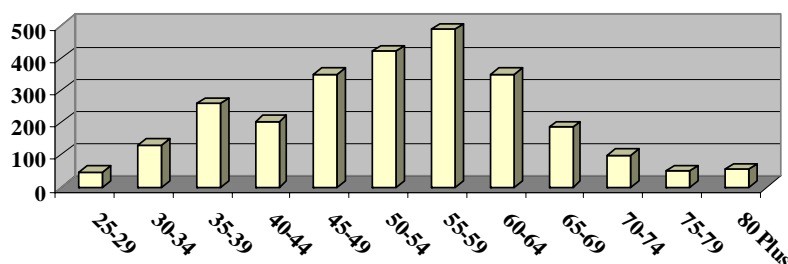
GEOGRAPHICAL LOCATION OF MEMBERS

PLEASE NOTE THAT STATISTICS ON THE LOCATION OF MEMBERS ARE NOT AVAILABLE IN THIS EDITION OF THE STATISTICS BOOKLET, BUT SHALL APPEAR IN FUTURE EDITIONS.

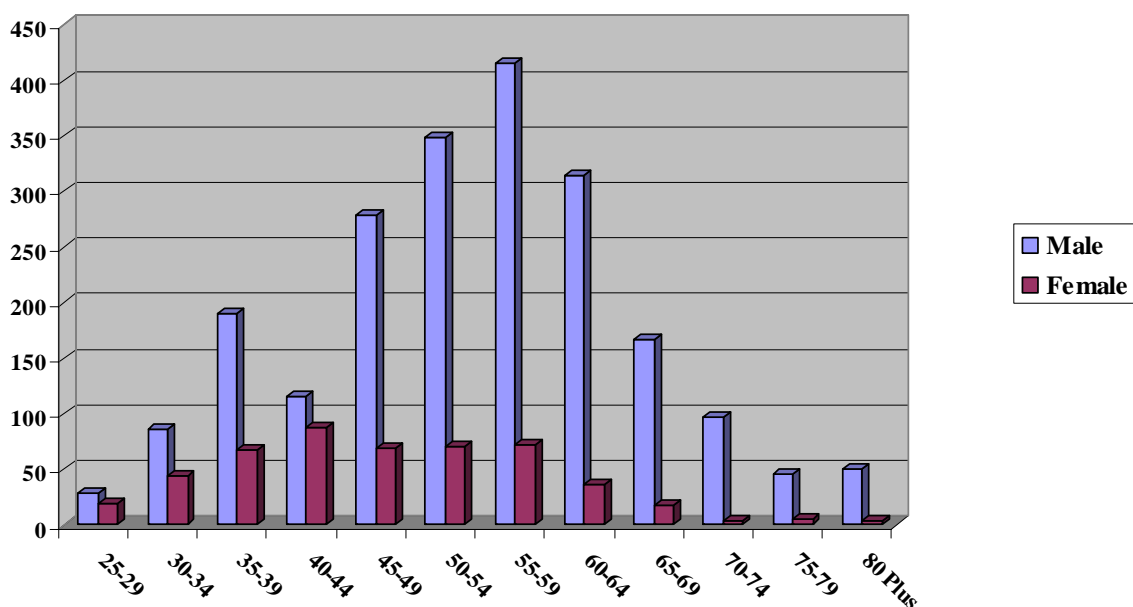
AGES OF MEMBERS

	20-24	25-29	30-34	35-39	40-44	45-49	50-54	55-59	60-64	65-69	70-74	75-79	80 Plus	Total
Male	0	28	86	190	116	279	349	416	314	166	97	45	50	2136
Female	0	19	44	68	87	69	71	72	36	18	3	5	4	496
Total	0	47	130	258	203	348	420	488	350	184	100	50	54	2632
Percentage	0.00%	1.79%	4.94%	9.80%	7.71%	13.22%	15.96%	18.54%	13.30%	6.99%	3.80%	1.90%	2.05%	

Ages of Members of the NSW Bar Association 2009

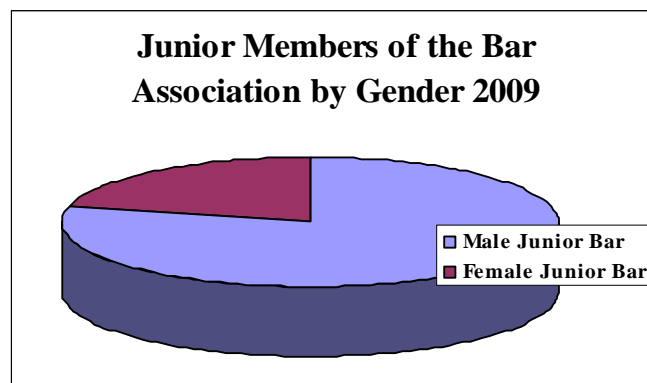
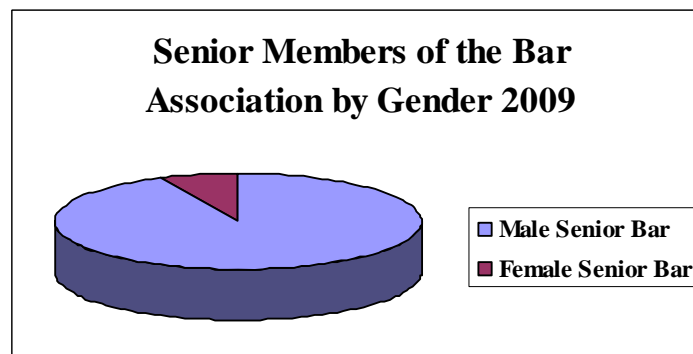
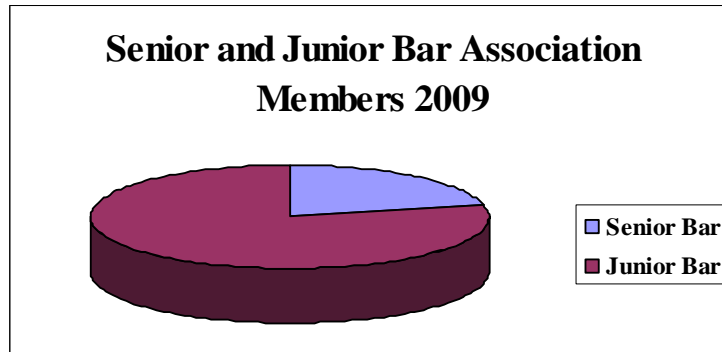


Ages of NSW Bar Association Members by Gender 2009



SENIOR AND JUNIOR MEMBERS (INNER/OUTER BAR)

	Total	Percentage
Male Senior Bar	547	19.80%
Female Senior Bar	40	1.45%
Male Junior Bar	1716	62.11%
Female Junior Bar	460	16.65%
Total	2763	



NOTE: Senior Counsel (QC and SC) are commonly called 'silks'. SCs have been appointed since 1993 and replaced the appointment of Queen's Counsel. The term 'junior' barrister means all barristers except those who have been appointed Senior Counsel (QC or SC). The term 'junior barrister' does not indicate the ability or number of years at the Bar; for example some 'juniors' have been practising for 30 years.